

# MegaPoints Controllers

## *Awesome layout control system*

Control your model railway from one or more tactile control panels

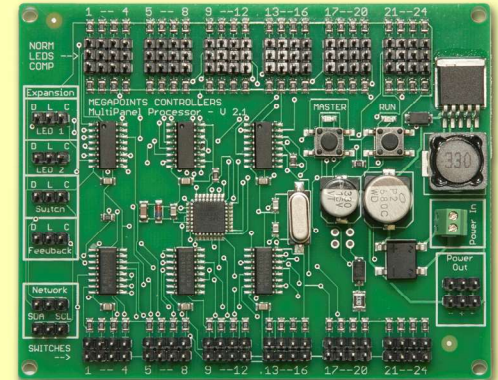
- NO SOLDERING! *It's all plug and play!* ✓
- Only uses a single cable between each control board.
- Includes *feedback channel display* option for:-
  - Block & section track occupancy ✓
  - Points position indication ✓
- Optional *bespoke professional mimic panel design* and build.
- Control servos, traditional solenoids, stall motors and relays.
- Works with *analogue and digital* layouts.

See website videos and product pages for more information.  
Our single MultiPanel control board does it all! →

*A single cable connects each control board together and operates in BOTH directions for feedback display.*

*Plug-and-play, NO Soldering for control panel hookup. Cables and buttons available pre-wired with plugs attached. See our new website for details.*

**Web & details:** [megapointscontrollers.com](http://megapointscontrollers.com)



Size 8cm x 10cm

1. Plug in LED cables
2. Plug in switch cables
3. Connect to control boards
4. Press buttons, start using!



# MegaPoints Controllers

## Awesome mimic panel control system

Have us **design and build your mimic panel** for you.

Professionally cut and **expertly assembled**.

We take care of all the details, **one supplier for everything**.

Available with or without enclosure (**flat or angled options**).

Use our LEDs and buttons (**preferred**) or your own.

**Plug and play wiring - absolutely no soldering**, just plug in cables.

Easy, **detachable wipe clean panel**, nothing attaches directly to fascia.

Only power and a signal cable connect the whole enclosure to your layout.

Feedback data **displays block occupancy** and **points position**, built right in.

**Works with analogue (DC) and digital (DCC)** - at the same time!

Use to drive traditional **solenoid** motors, **stall** motors, **servos** or **relays**.

**Kato** points option coming soon.

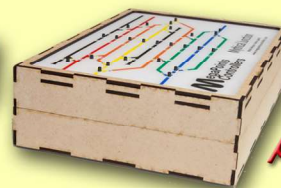
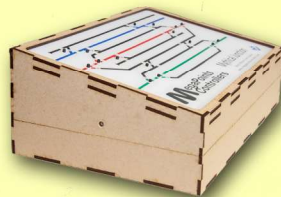
Extensive **how-to video library** shows you how.

Telephone and email support for **advice** and **guidance**.

Our website has **many examples of our work**.

Maximum single panel size 600mm x 350mm

(**multiple panels snap together**).

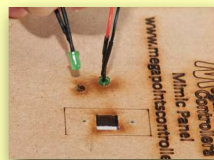


Multiple enclosure styles

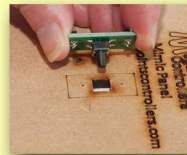
**No soldering!  
Plug-n-play  
panel wiring.**



Locating holes for LEDs and buttons clearly marked.



LEDs push into rear panel.



Buttons attach from the rear, held with screws (supplied).

**Website & details:** [megapointscontrollers.com](http://megapointscontrollers.com)

MegaPoints Controllers  
Waverley, Warrington Road,  
Cuddington, Cheshire, CW8 2LW  
Tel: 07846 409320  
Email: [info@megapointscontrollers.com](mailto:info@megapointscontrollers.com)